

PARTS MANUAL

Model

SB106WG

Light Tower

PUB-LT001
Rev. 04/08

Robin America, Inc.

940 Lively Blvd. • Wood Dale, IL 60191 • Phone: 630-350-8200 • Fax: 630-350-8212
e-mail: sales@robinamerica.com • www.robinamerica.com

© Copyright 2008 Robin America, Inc.

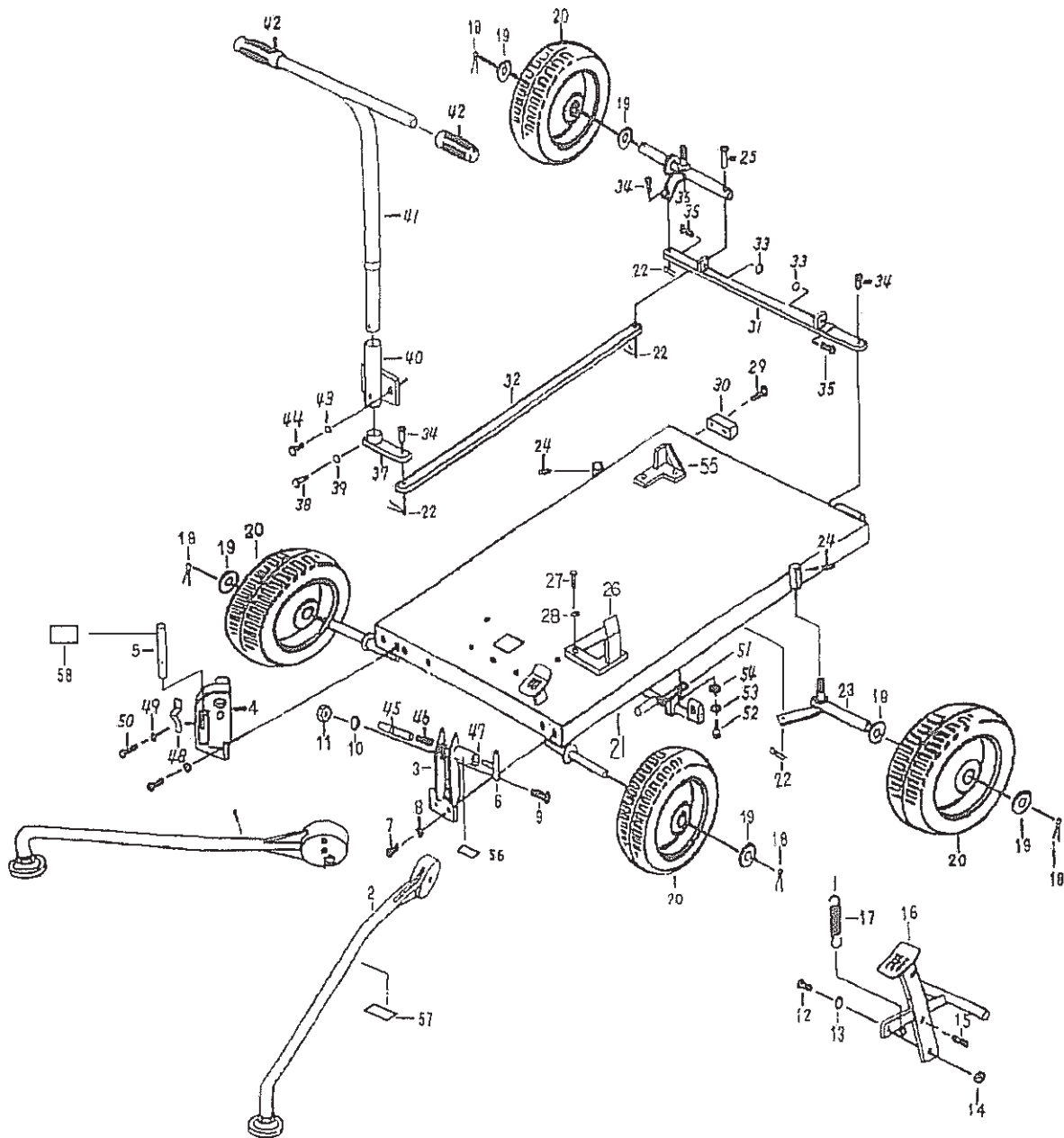
GROUP INDEX

Group Name	Page
Base Frame	6
Pole Group	8
Lighting Group	10
Mast Lock Group	14

INDEX OF DESCRIPTION SYMBOLS			
SYMBOL	DESCRIPTION	SYMBOL	DESCRIPTION
AY	ASSEMBLY	P=	PITCH (in mm)
CP	COMPLETE	P.T.O. (PTO)	POWER TAKE OFF
EX	EXPORT (from Japan)	REF	REFERENCE
FIG	FIGURE	R.H. (RH)	RIGHT HAND SIDE
FR	FRONT	RR	REAR
"	INCH	STD	STANDARD
INCL	INCLUDE	SW	SWITCH
~L	LITER	T=	THICKNESS (in mm)
L=	LENGTH (in. mm)	UN	UNIT
L.H. (LH)	LEFT-HAND SIDE	U.S.	UNDER SIZE
MECH	MECHANICAL	~V	VOLTAGE
NO (NON)	NONE	~W	WATT
OPT	OPTIONAL	W/	WITH
O.S.	OVER SIZE	W/O	WITHOUT

SECTION 1 BASE FRAME GROUP

FIG. 100

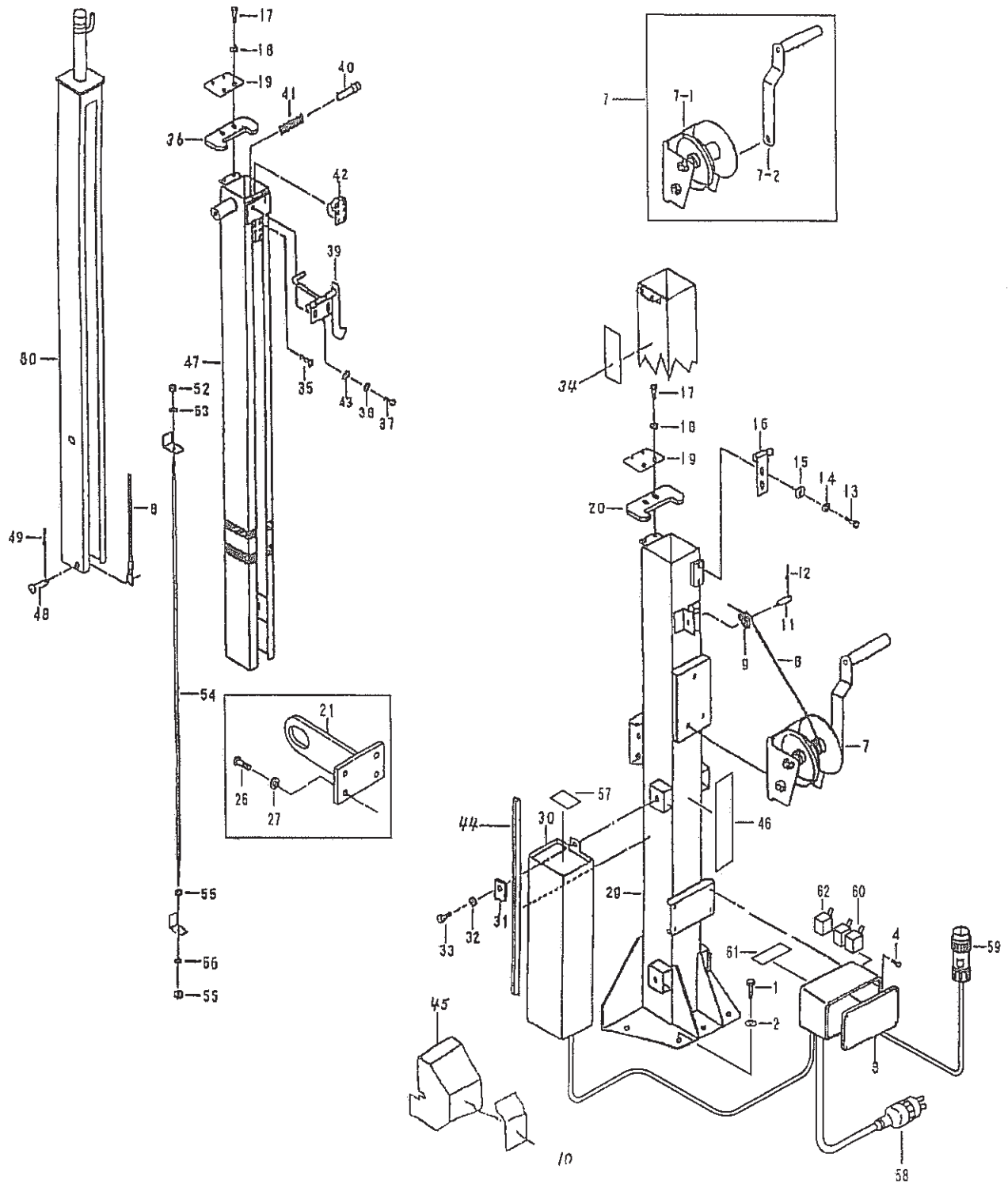


SECTION 1 BASE FRAME GROUP

REF	PART NO	DESCRIPTION	QTY	REMARKS	FROM - TO	FIG
1	RG1-25201-08	Outrigger A	1			100
2	RG1-25202-08	Outrigger B	1			100
3	RG1-25216-08	Bracket, outrigger B	1			100
4	RG1-25203-08	Bracket, outrigger A	1			100
5	RG1-25204-08	Assist Pipe	1			100
6	RG1-25205-08	Outrigger Handle	2			100
7	RG1-23250-08	Cap, bolt	4			100
8	RG1-20251-08	Spring Washer	4			100
9	RG1-25207-08	Bolt, hexagon	2			100
10	RG1-25208-08	Washer	2			100
11	RG1-25209-08	Nut	2			100
12	RG1-20512-08	Bolt	1			100
13	RG1-04021-08	Plate Washer	1			100
14	RG1-20239-08	Nut	1			100
15	RG1-21210-18	Pin	1			100
16	RG1-25210-08	Brake Pedal	1			100
17	RG1-20223-08	Spring A	1			100
18	RG1-20236-08	Pin	4			100
19	RG1-04021-11	Plate Washer	6			100
20	RG1-04021-10	Tire	4			100
21	RG1-25223-08	Base Frame	1			100
22	RG1-20244-08	Pin	4			100
23	RG1-22203-08	Steering Arm A	1			100
24	RG1-20209-08	Grease Nipple	2			100
25	RG1-20246-08	Pin B	1			100
26	RG1-25219-08	Holder	3			100
27	RG1-25220-08	Bolt, hexagon	8			100
28	RG1-04021-22	Spring Washer	8			100
29	RG1-22211-18	Screw	4			100
30	RG1-22210-08	Bumper	2			100
31	RG1-25221-08	Rod C	1			100
32	RG1-25222-08	Rod D	1			100
33	RG1-20523-08	Nut	2			100
34	RG1-20243-08	Pin	3			100
35	RG1-20512-08	Bolt	2			100
36	RG1-22207-08	Steering Arm B	1			100
37	RG1-20252-08	Handle Arm	1			100
38	RG1-20253-08	Bolt	1			100
39	RG1-20251-08	Spring Washer	1			100
40	RG1-20249-28	Bracket, handle	1			100
41	RG1-22209-08	Handle	1			100
42	RG1-20229-08	Grip	2			100
43	RG1-20251-08	Spring Washer	2			100
44	RG1-20507-08	Bolt	2			100
45	RG1-25211-08	Taper Pin	2			100
46	RG1-25212-08	Spring	2			100

SECTION 2 POLE GROUP

FIG. 200

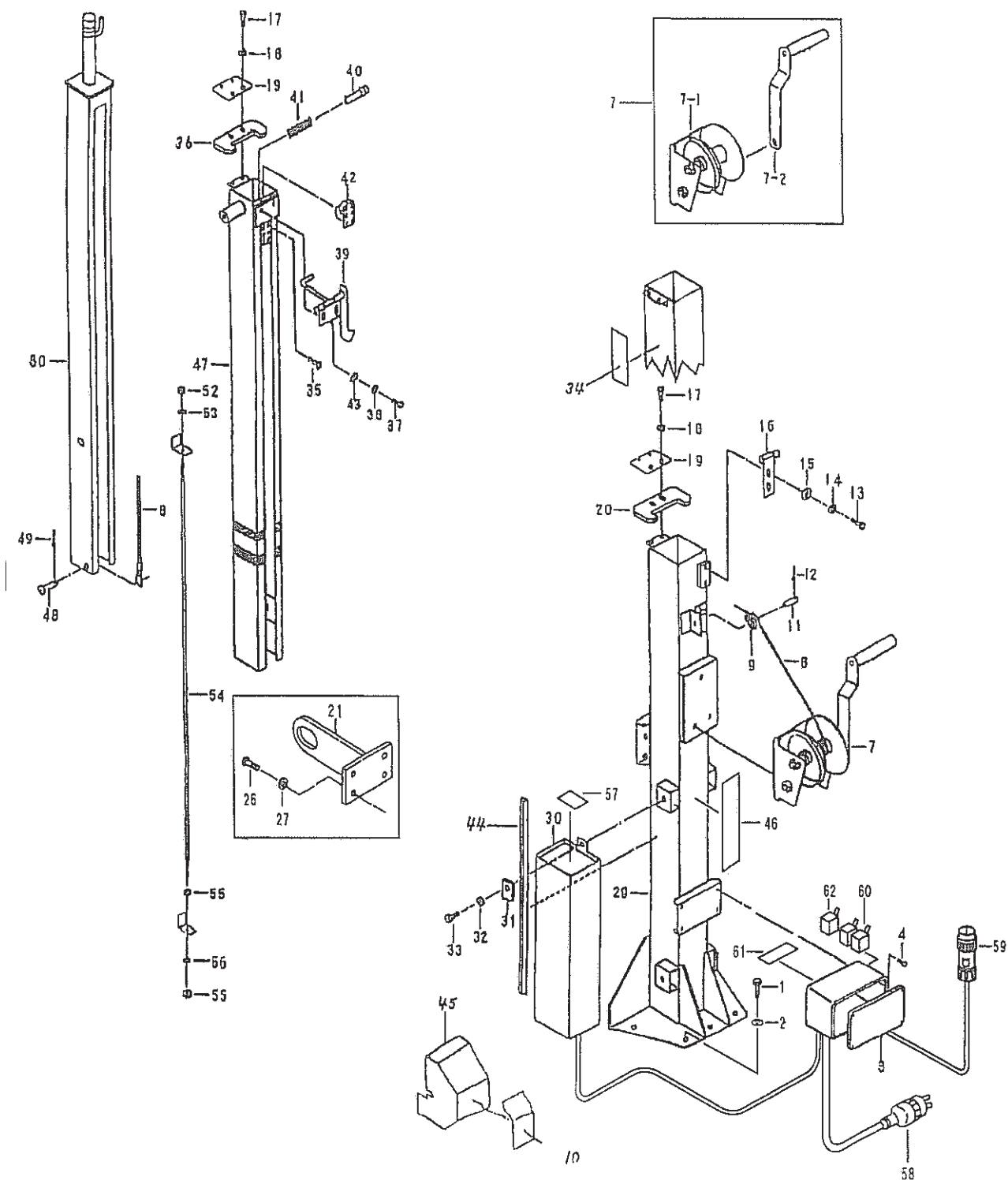


SECTION 2 POLE GROUP

REF	PART NO	DESCRIPTION	QTY	REMARKS	FROM - TO	FIG
1	RG1-20348-08	Bolt	5			200
2	RG1-04021-14	Spring Washer	5			200
3	RG1-25411-08	Wiring Box	1			200
4	RG1-20312-08	Bolt	4			200
5	RG1-30435-08	Bolt	3			200
6	RG1-04021-22	Spring Washer	3			200
7	RG1-22301-08	Winch AY	1			200
7-1	RG1-22330-08	Winch w/o handle	1			200
7-2	RG1-20279-08	Winch Handle	1			200
8	RG1-22302-08	Wire	1			200
9	RG1-22303-08	Roller	1			200
10	RG1-22902-08	Label, caution	1			200
11	RG1-22304-08	Pin	1			200
12	RG1-20316-08	Pin, cotter	2			200
13	RG1-21316-08	Bolt	2			200
14	RG1-04021-22	Spring Washer	2			200
15	RG1-22305-08	Washer	1			200
16	RG1-22306-08	Mast Catch B	4			200
17	RG1-04021-21	Bolt, hexagon	4			200
18	RG1-04021-22	Spring Washer	2			200
19	RG1-22307-08	Cable Holder	1			200
20	RG1-22308-08	Guide 1	1			200
21	RG1-25337-08	Hanger	1			200
26	RG1-20348-08	Bolt	4			200
27	RG1-04021-14	Spring Washer	4			200
29	RG1-22312-28	Pole 1	1			200
30	RG1-25410-08	Ballast	1			200
31	RG1-22331-08	Clamping Screw	2			200
32	RG1-20251-08	Spring Washer	2			200
33	RG1-20348-08	Bolt	2			200
34	RG1-22903-08	Label, trademark	1			200
35	RG1-22314-08	Screw	6			200
36	RG1-22325-08	Guide 2	1			200
37	RG1-21316-08	Bolt	2			200
38	RG1-04021-22	Spring Washer	2			200
39	RG1-22316-08	Mast Catch 2	1			200
40	RG1-22317-08	Lock Pin	1			200
41	RG1-22318-18	Spring B	1			200
42	RG1-22319-11	Roller	1			200
43	RG1-22305-08	Washer	2			200
44	RG1-20324-08	Mold	1			200
45	RG1-22324-08	Winch Cover	1			200
46	RG1-22901-18	Label, warning	1			200
47	RG1-20329-18	Pole 2	1			200
48	RG1-22321-08	Pine Wire	1			200
49	RG1-20244-08	Cotter Pin	1			200

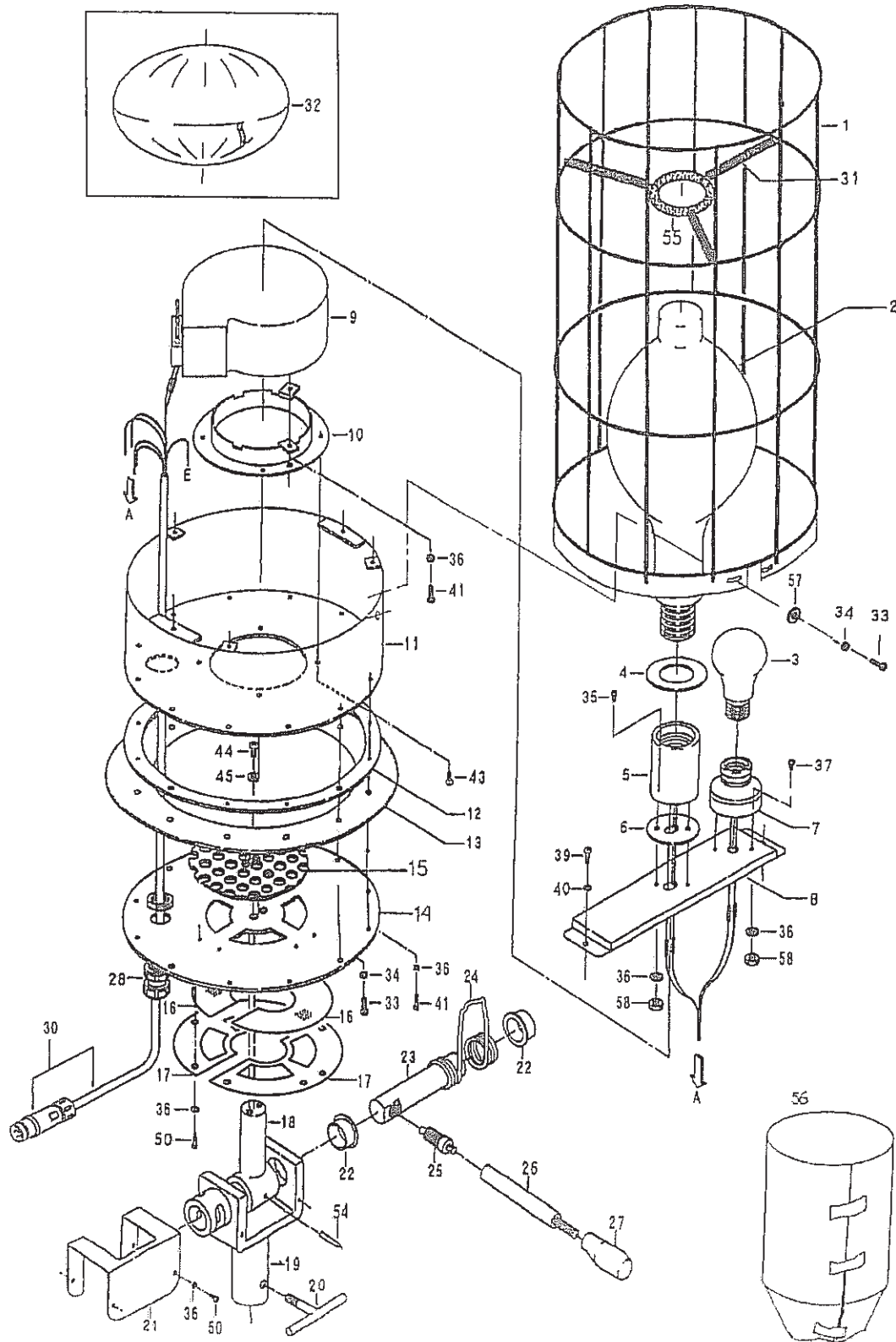
SECTION 2 POLE GROUP

FIG. 200



SECTION 3 LIGHTING GROUP

FIG. 300

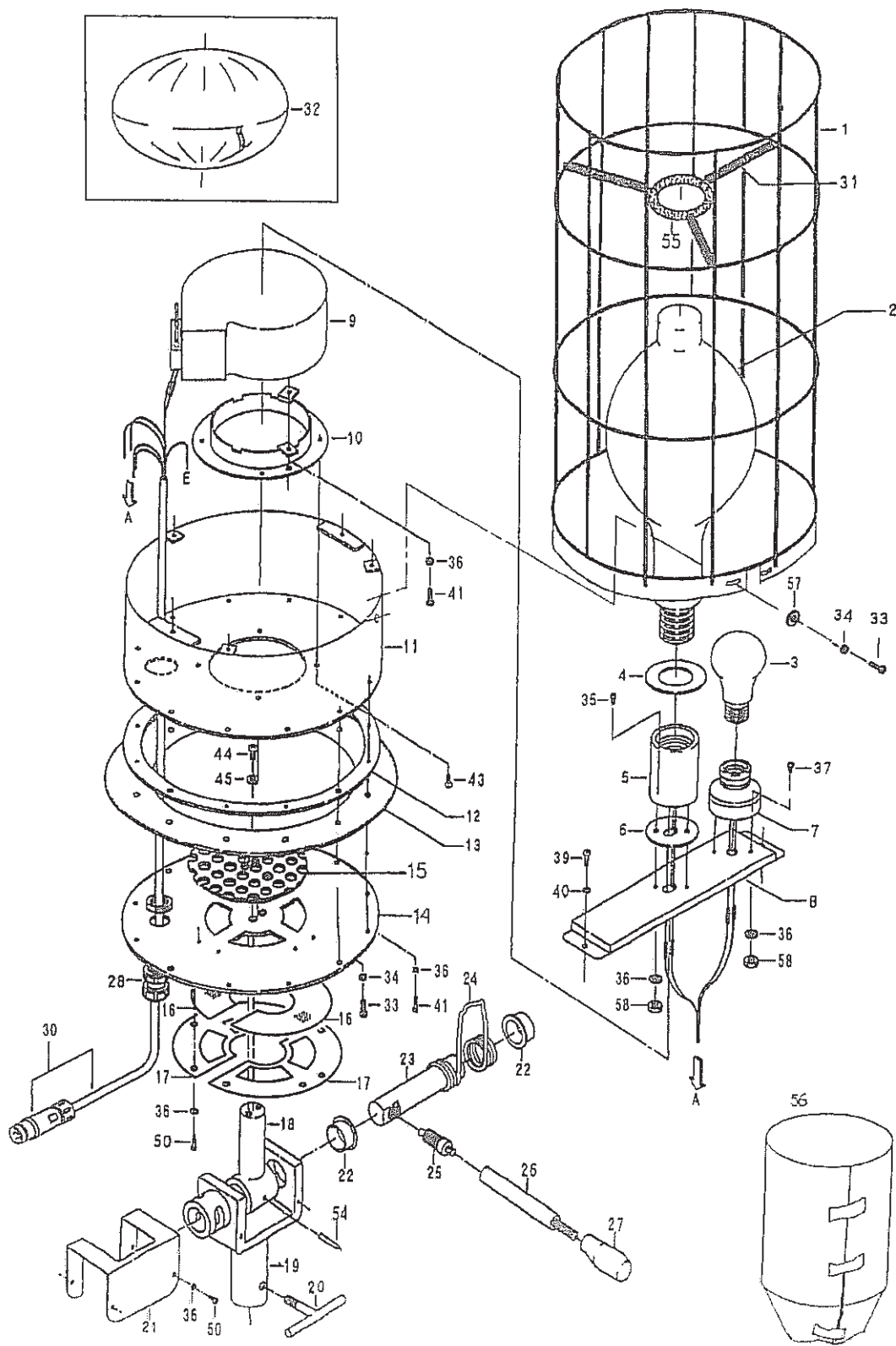


SECTION 3 LIGHTING GROUP

REF	PART NO	DESCRIPTION	QTY	REMARKS	FROM - TO	FIG
1	RG1-25301-08	Guard	1			300
2	RG1-25401-08	Lamp	1			300
3	RG1-25402-08	Lamp	1			300
4	RG1-25302-08	Packing	1			300
5	RG1-25403-08	Lamp Socket	1			300
6	RG1-25303-08	Packing	1			300
7	RG1-25404-08	Valve Socket	1			300
8	RG1-25304-08	Base, lamp	1			300
9	RG1-25405-08	Blower	1			300
10	RG1-25305-08	Flange	1			300
11	RG1-25306-08	Body	1			300
12	RG1-25307-08	Fastener Control Plate	1			300
13	RG1-25308-08	Fastener	1			300
14	RG1-25309-08	Bottom Plate	1			300
15	RG1-25310-08	Duct Plate	1			300
16	RG1-25311-08	Wire Netting	2			300
17	RG1-25312-08	Filter Support	2			300
18	RG1-25313-08	Pole Shaft	1			300
19	RG1-25314-08	Pole Stand	1			300
20	RG1-25315-08	Stop Handle	1			300
21	RG1-25316-08	Stand Cover	1			300
22	RG1-25317-08	Dry Bushing	2			300
23	RG1-25318-08	Shaft	1			300
24	RG1-25319-08	Spring	1			300
25	RG1-25320-08	Index Plunger	1			300
26	RG1-25321-08	Handle	1			300
27	RG1-25322-08	Handle Grip	1			300
28	RG1-22412-08	Cap, connector	1			300
30	RG1-25407-08	Connector	1			300
31	RG1-25323-08	Lamp Stopper Spring	3			300
32	RG1-25324-08	Cover	1			300
33	RG1-25325-08	Screw	4			300
34	RG1-25326-08	Spring Washer	4			300
35	RG1-25327-08	Screw	2			300
36	RG1-25328-08	Spring Washer	26			300
37	RG1-25329-08	Screw	2			300
39	RG1-25330-08	Screw	2			300
40	RG1-25331-08	Spring Washer	2			300
41	RG1-25332-08	Screw	10			300
43	RG1-25333-08	Screw	4			300
44	RG1-25334-08	Bolt, hexagon	2			300
45	RG1-20337-08	Spring Washer	2			300
50	RG1-25335-08	Screw	12			300
54	RG1-25336-08	Spring Pin	1			300
55	RG1-04023-16	Lamp Stopper	1			300
56	RG1-25901-08	Green Cover	1			300

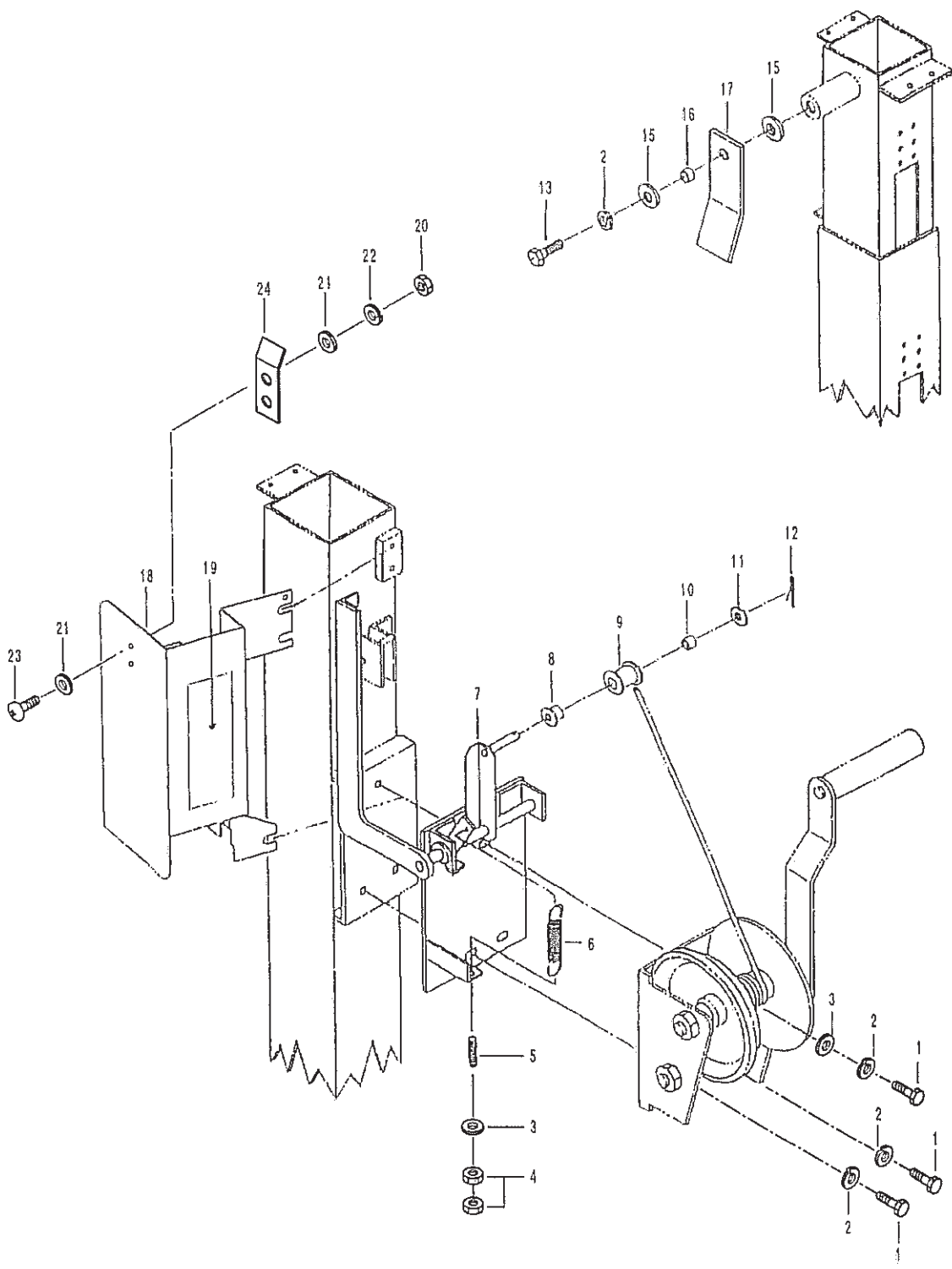
SECTION 3 LIGHTING GROUP

FIG. 300



SECTION 4 MAST LOCK GROUP

FIG. 400



PRINTED IN THE USA